

MONTAGEANLEITUNG

Fliesenträger-Module

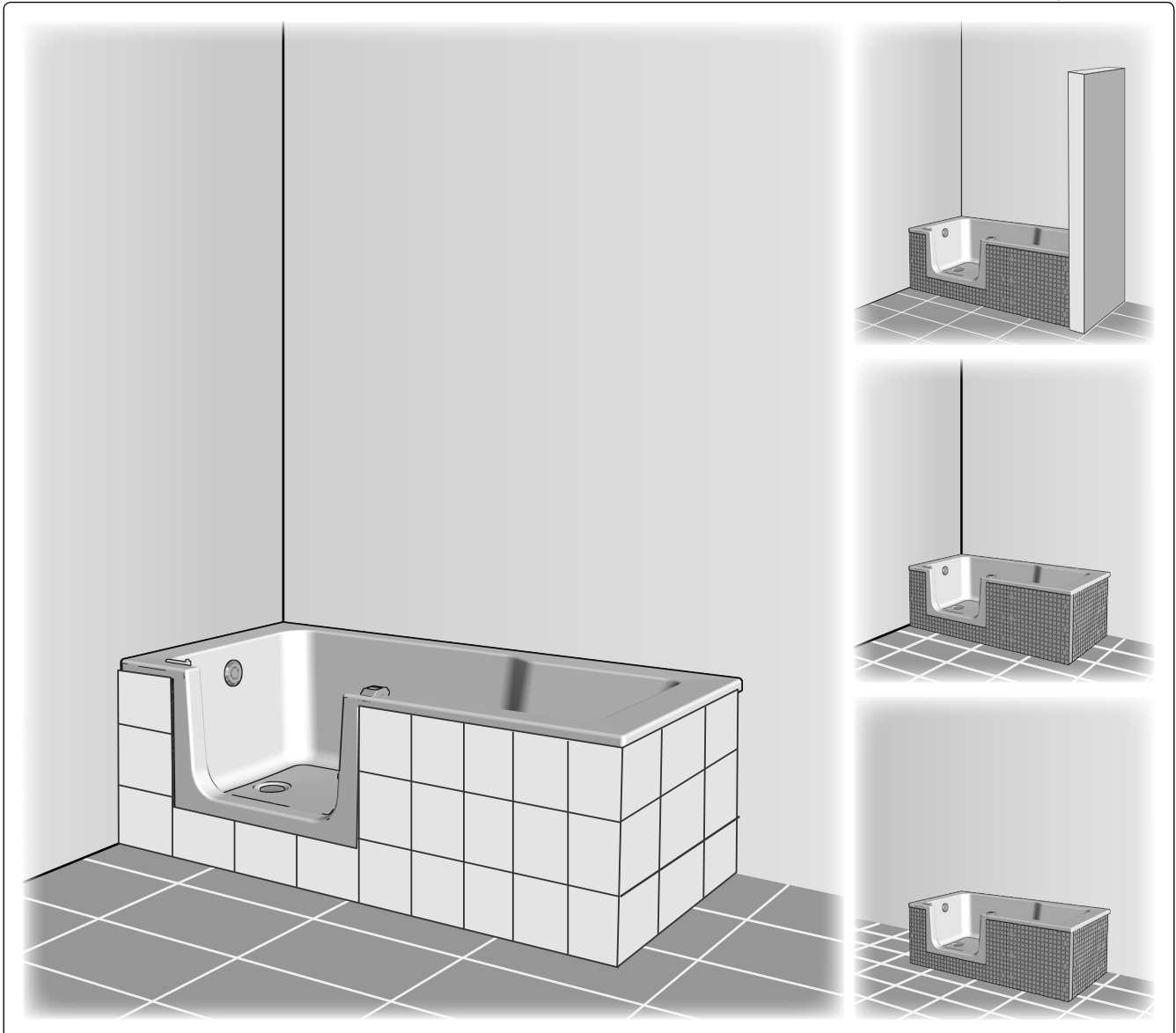
ASSEMBLY INSTRUCTIONS

Tile substrate modules

NOTICE DE MONTAGE

Modules support de carrelage

MA_Duett_FL_Traeger_11916_10_15



Vor Gebrauch sorgfältig lesen! Zum Nachschlagen und Aufbewahren dem Endkunden übergeben!

Read carefully before use! Hand over to the customer for looking up and storage!

Avant emploi lire soigneusement! Remettez le au client pour la recherche et le stockage!

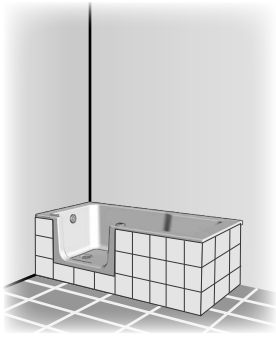
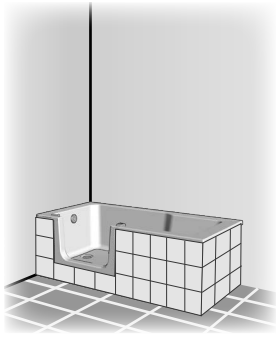
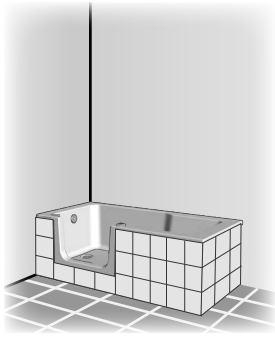
DEUTSCH
Originalsprache

ENGLISH
Translation

FRANCAIS
Traduction

DUETT

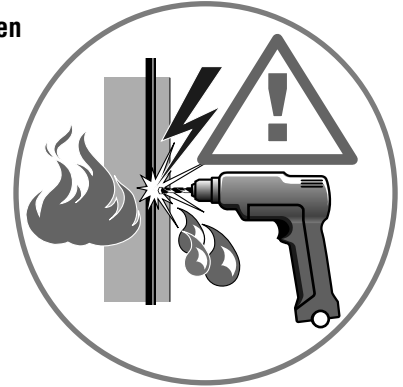
SHOWER & BATH

INHALTSVERZEICHNIS	OVERVIEW	VUE D'ENSEMBLE
INHALTSVERZEICHNIS..... 2	OVERVIEW..... 2	VUE D'ENSEMBLE..... 2
SICHERHEITS-HINWEISE 3	SAFETY INSTRUCTIONS..... 3	INSTRUCTIONS SÉCURIT..... 3
BENÖTIGTES WERKZEUG..... 4	NECESSARY TOOLS..... 4	OUTILLAGE NECESSAIRE 4
MONTAGESET..... 4	ASSEMBLY KIT 4	SET DE MONTAGE 4
VARIANTE..... 5	VARIANTE..... 5	VARIANTE..... 5
		
<p>Montageanleitung für Einbau LINKS - bei Einbau RECHTS - spiegelgleicher Aufbau.</p>	<p>Assembly instructions for installation LEFT - for installation RIGHT - assemble in mirror image.</p>	<p>C'est prévue pour une installation à GAUCHE - en cas d'une installation à DROITE -A inverser pour partie fixe en GAUCHE.</p>

DE Vor dem Einbau bitte unbedingt beachten!

- Produkt **vor dem Einbau**, auf Richtigkeit, Beschädigungen und das Zubehör auf Vollständigkeit **überprüfen**.
- **Bei sichtbarem Schaden Produkt keinesfalls einbauen!**
- **Beachten Sie beim Hantieren das teilweise hohe Gewicht und/oder die großen Abmessungen von Einzelteilen**
- **Beachten Sie beim Bohren der Löcher, dass Sie keine Leitungen (Elektro, Gas, Wasser) beschädigen.**

Unsere Haftung beschränkt sich alleine auf unsere Produkte und kann daher nicht auf den Ein- und Ausbau ausgedehnt werden. Die Kosten für einen nachträglichen Aus- und Einbau eines Produkts und die damit verursachten Schäden sind kein Bestandteil der Garantie.



EN Please note carefully before installing

- Before installing, check for correctness and damage and the accessories for completeness.
- **Do not under any circumstances install product with visible damage!**
- **Take the great weight and/or the large dimensions into consideration when handling individual parts!**
- **When drilling holes do not damage hidden pipes and wiring.**

Our liability is limited to our products alone and therefore cannot be extended to installation and dismantling. Costs for subsequent dismantling and installation of a product and damage caused thereby are not part of the guarantee.

FR A respecter impérativement avant le montage

- Avant le montage de vérifier qu'il s'agit du bon modèle, qu'elle n'est pas endommagée et que les accessoires sont complets.
- **En cas de dommages visibles, ne pas monter le produit!**
- **Lors de la manutention, merci de prêter attention au poids parfois très élevé et/ou aux dimensions de certaines pièces!**
- **Faites attention en percant les trous de ne pas endommager les tuyauteries (cables électriques, canalisations de gaz, d'eau, etc).**

Notre responsabilité se limite à nos produits et ne peut être étendue sur l'installation et le démontage. Les coûts générés lors d'un démontage après installation et d'une ré-installation d'un produit et les dommages qui en résultent ne pourront être pris en charge par la garantie.

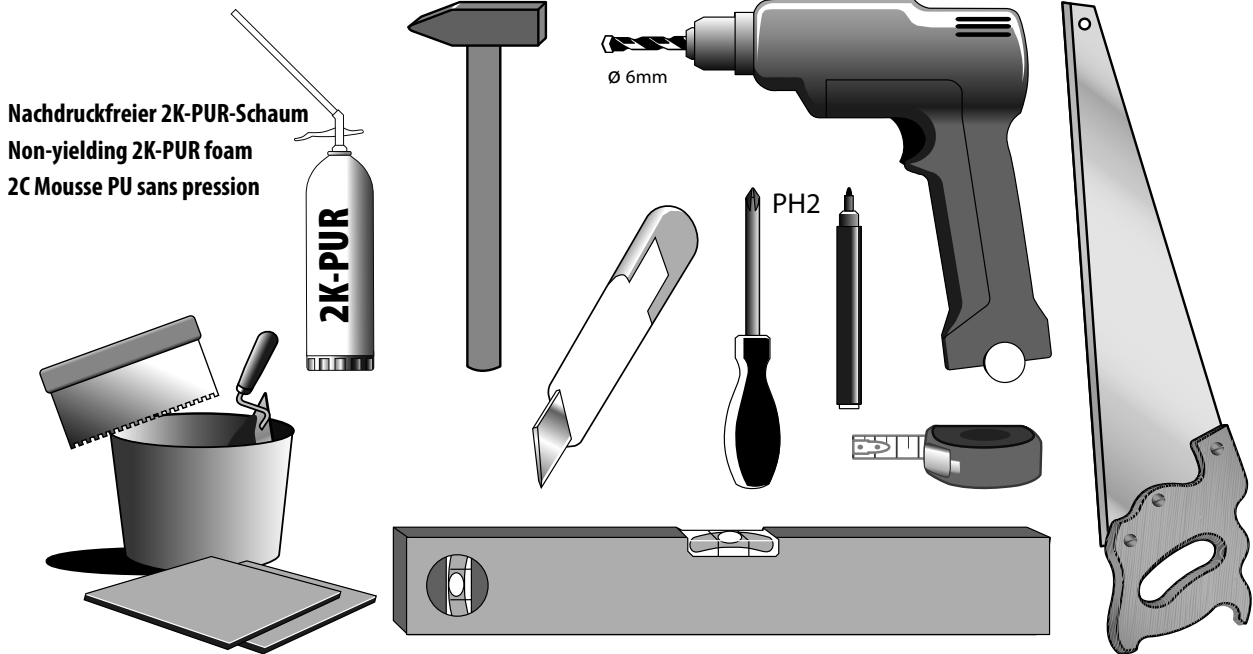
DUETT

SHOWER & BATH

BENÖTIGTES WERKZEUG

NECESSARY TOOLS

OUTILLAGE NECESSAIRE



MONTAGESET

ASSEMBLY KIT

SET DE MONTAGE

2x 4,2X25mm

MatNr: 24193



2x-4,3-A2

MatNr: 2461



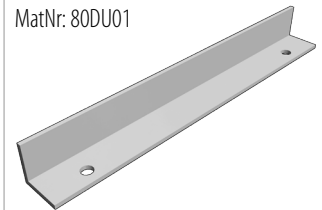
2x Ø 6mm

MatNr: 24410



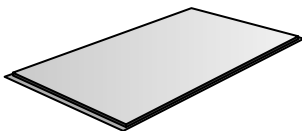
1x

MatNr: 80DU01



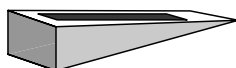
10x

MatNr: 18401



4x

MatNr: 706536



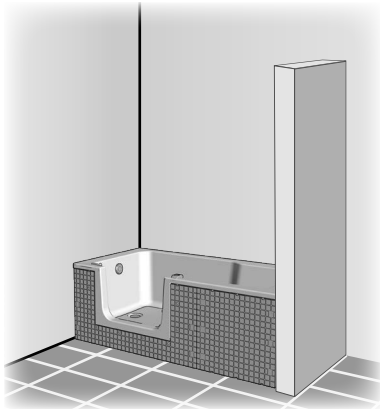
DUETT

SHOWER & BATH

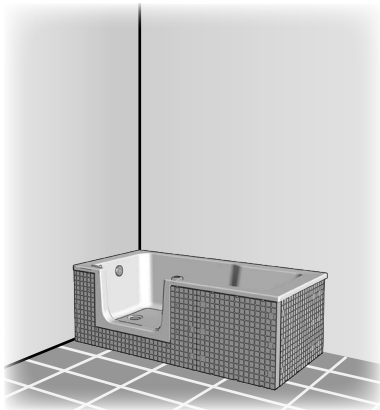
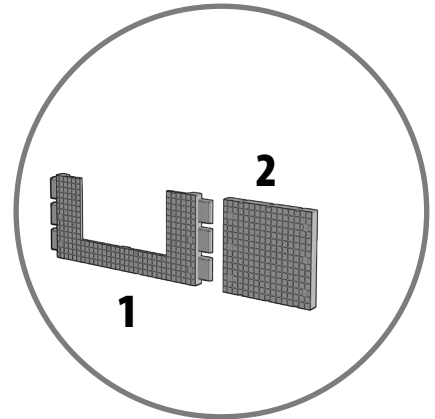
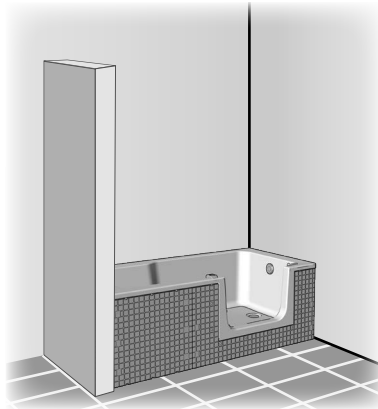
VARIANTE

VARIANTE

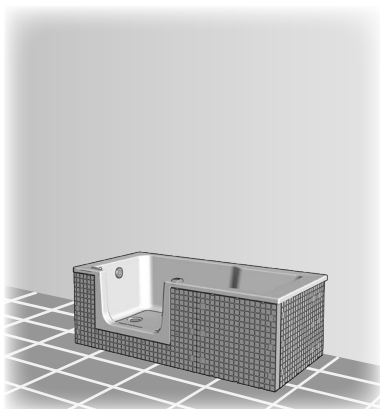
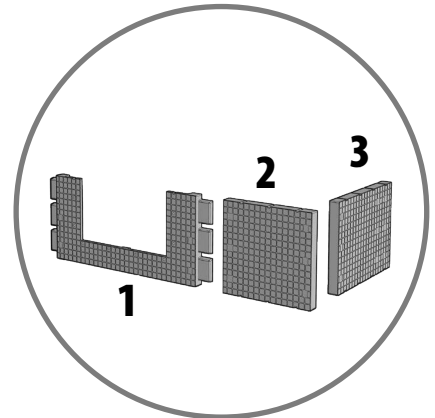
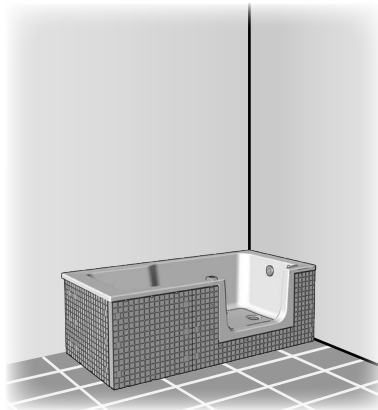
VARIANTE



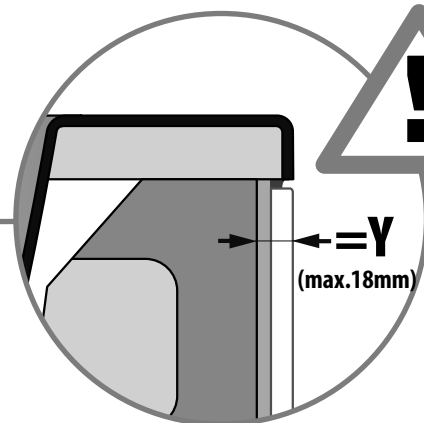
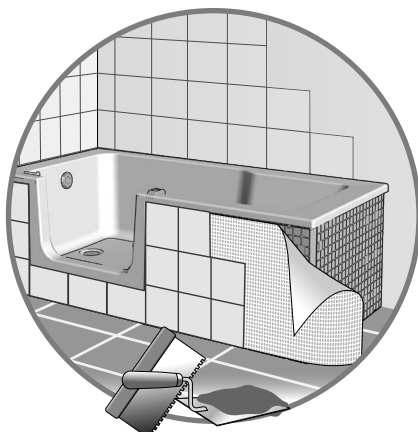
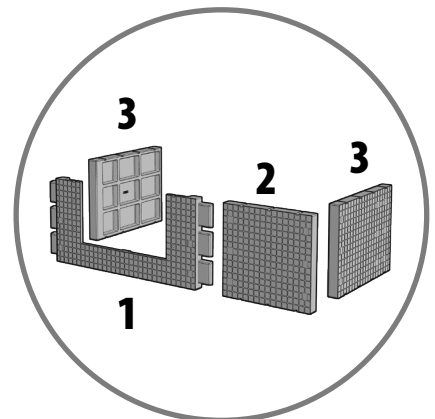
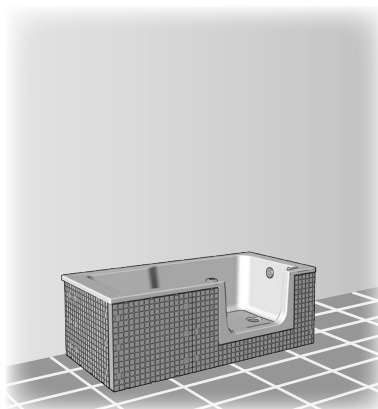
1.



2.



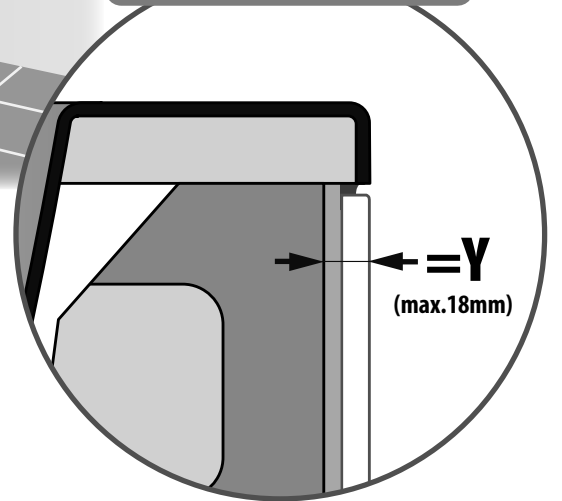
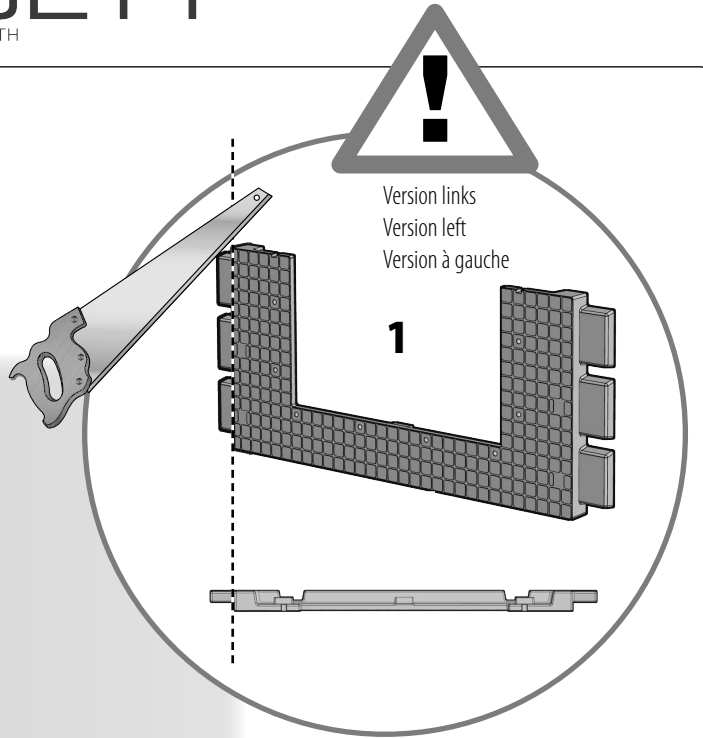
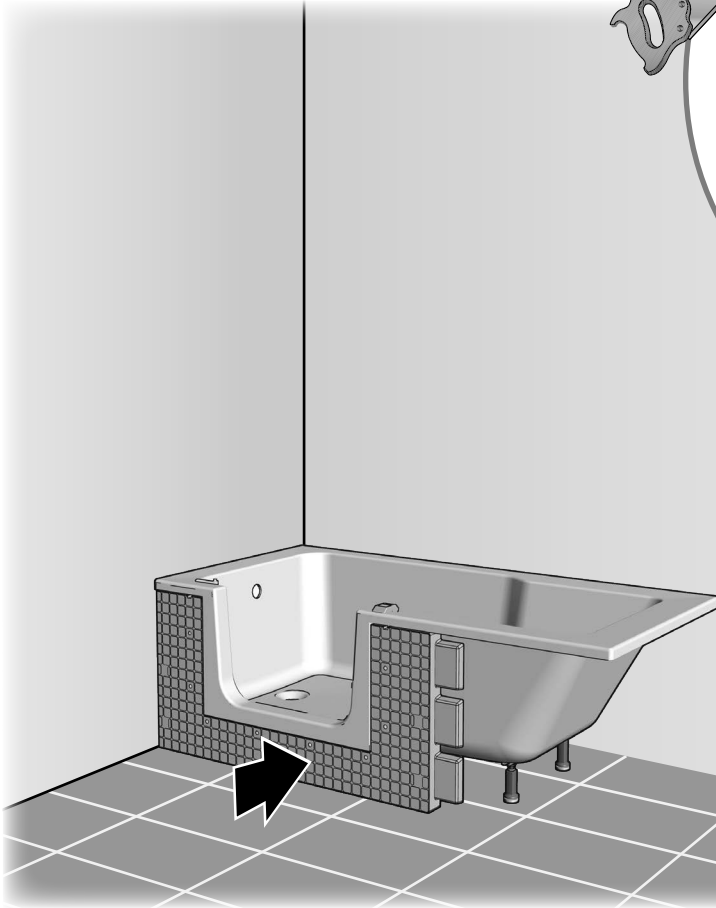
3.



DUETT

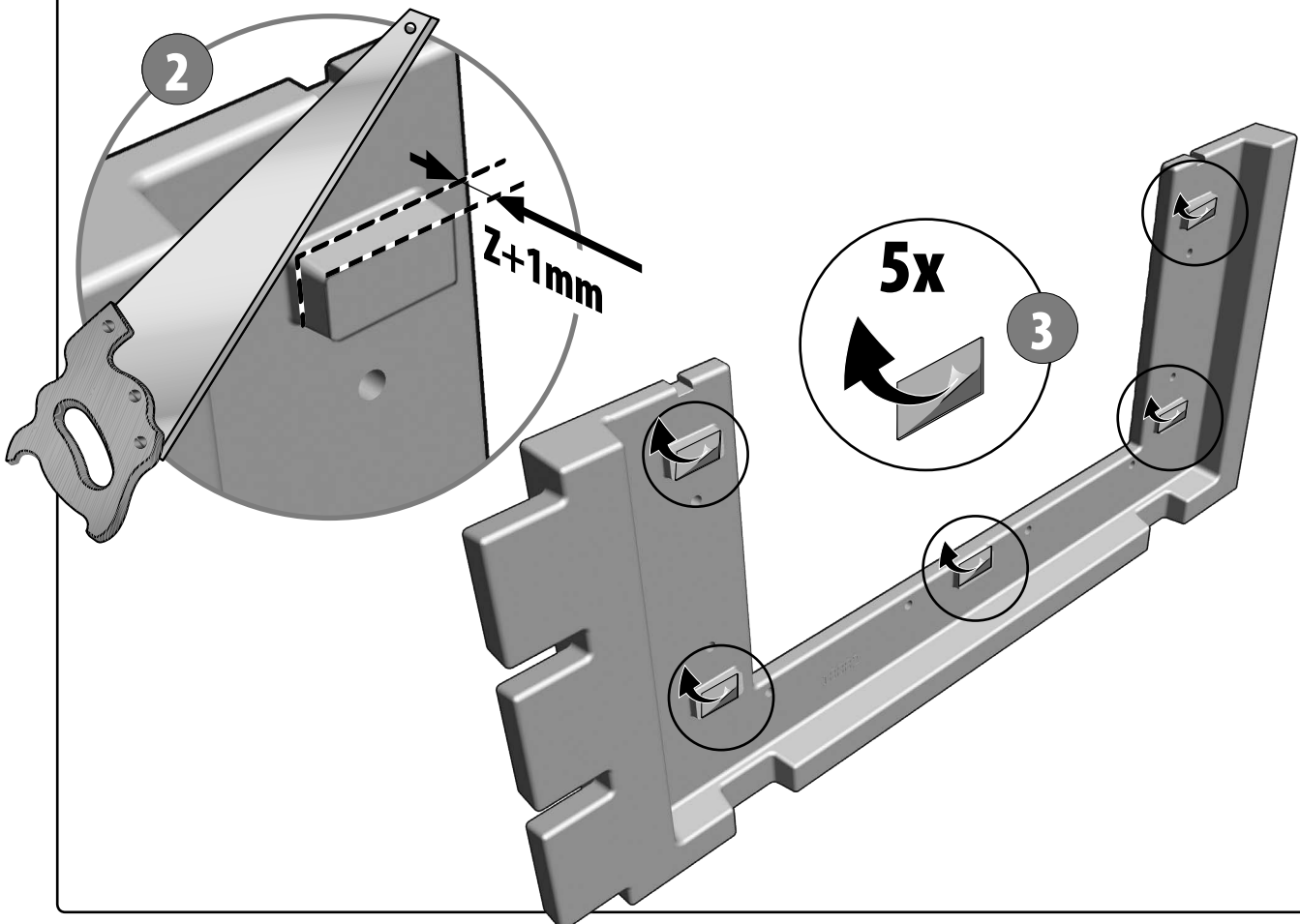
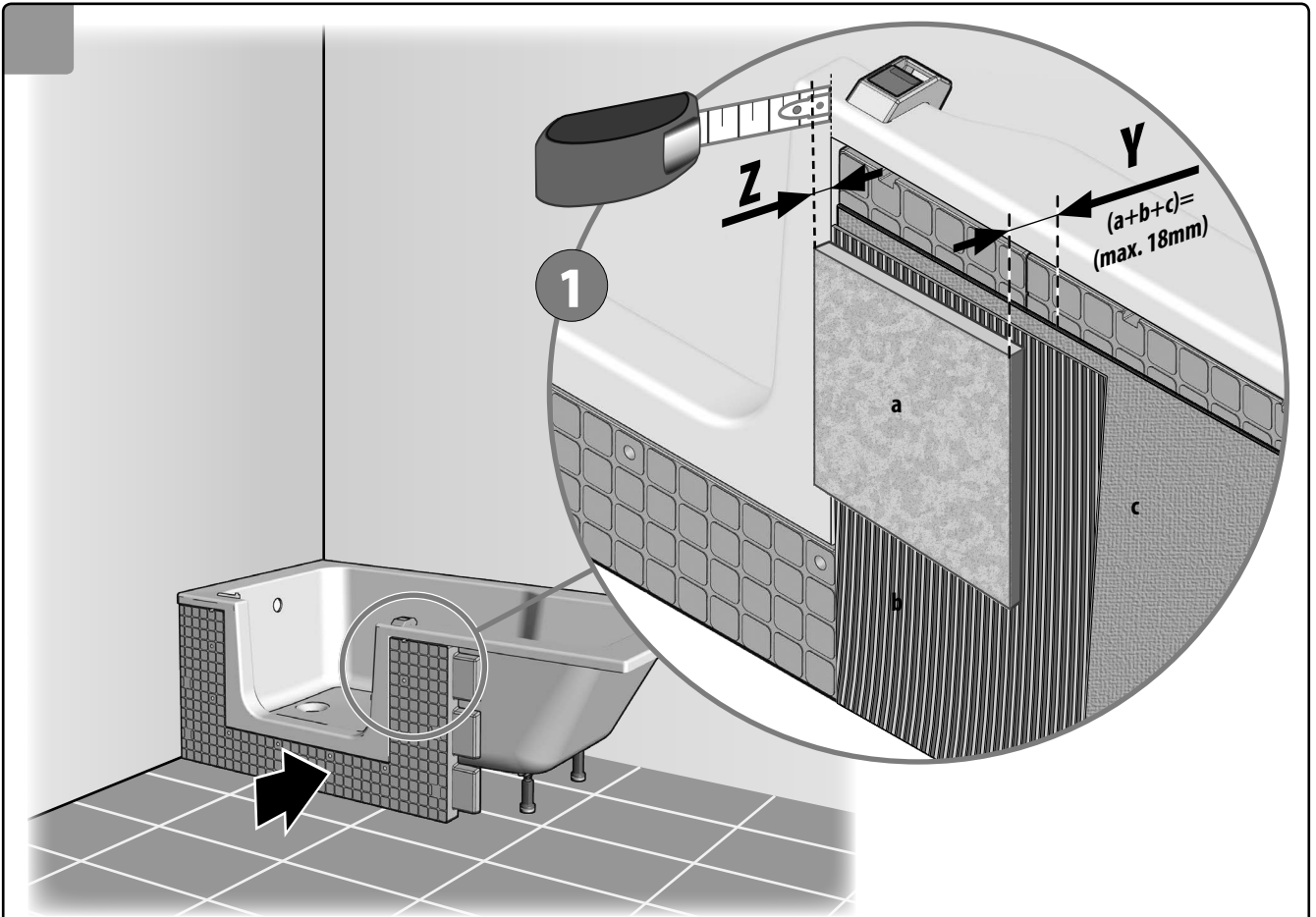
SHOWER & BATH

1



DUETT

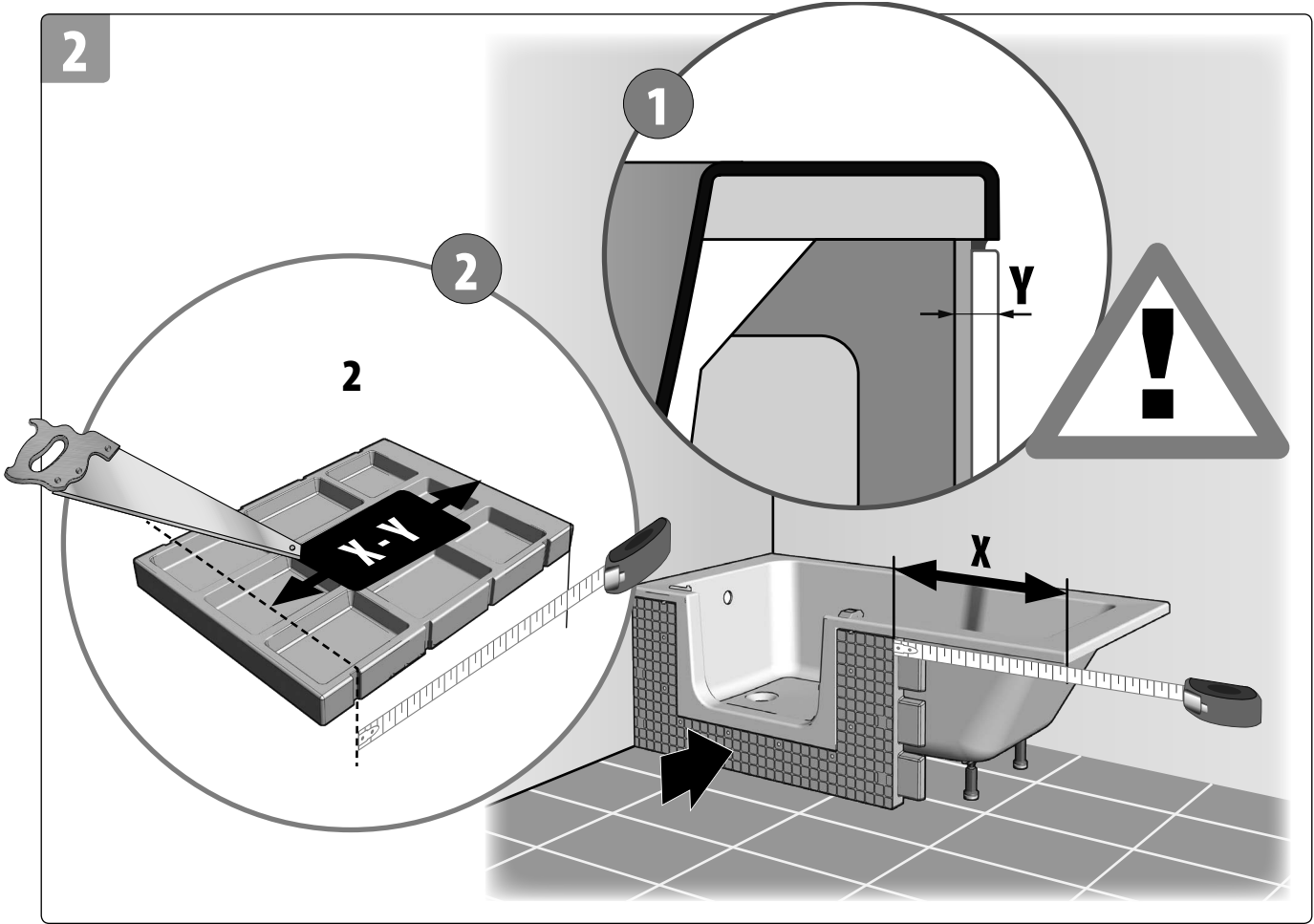
SHOWER & BATH



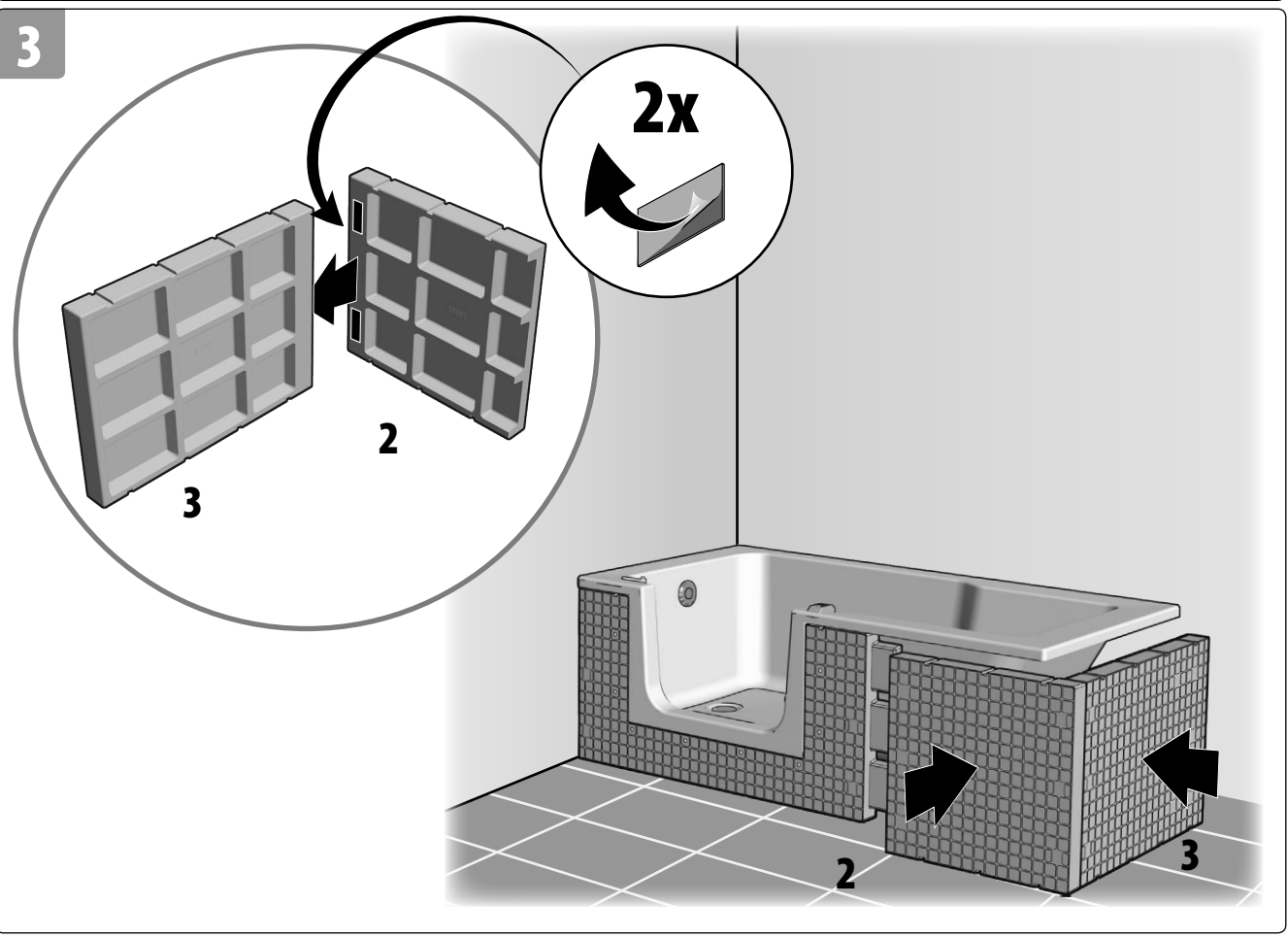
DUETT

SHOWER & BATH

2



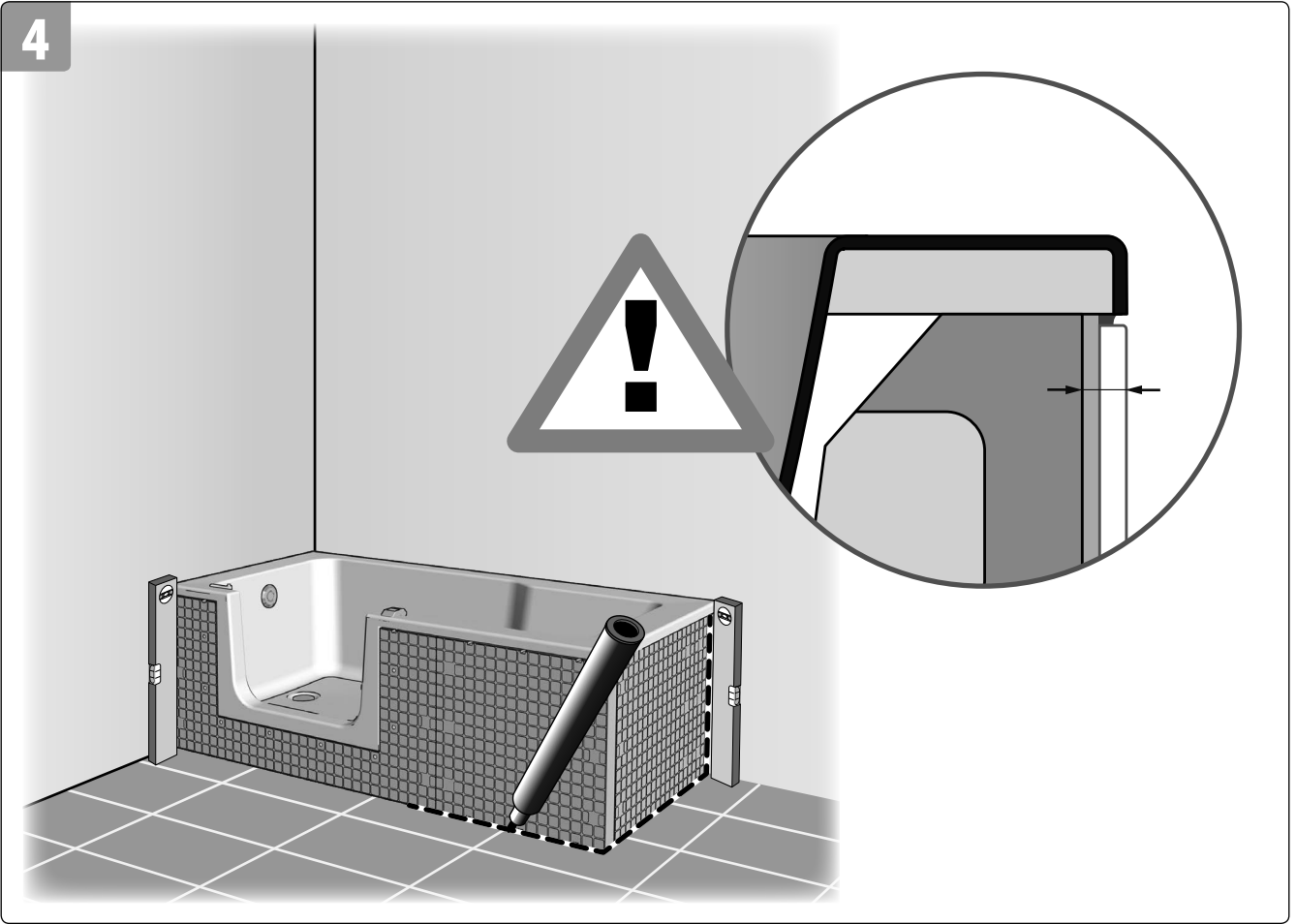
3



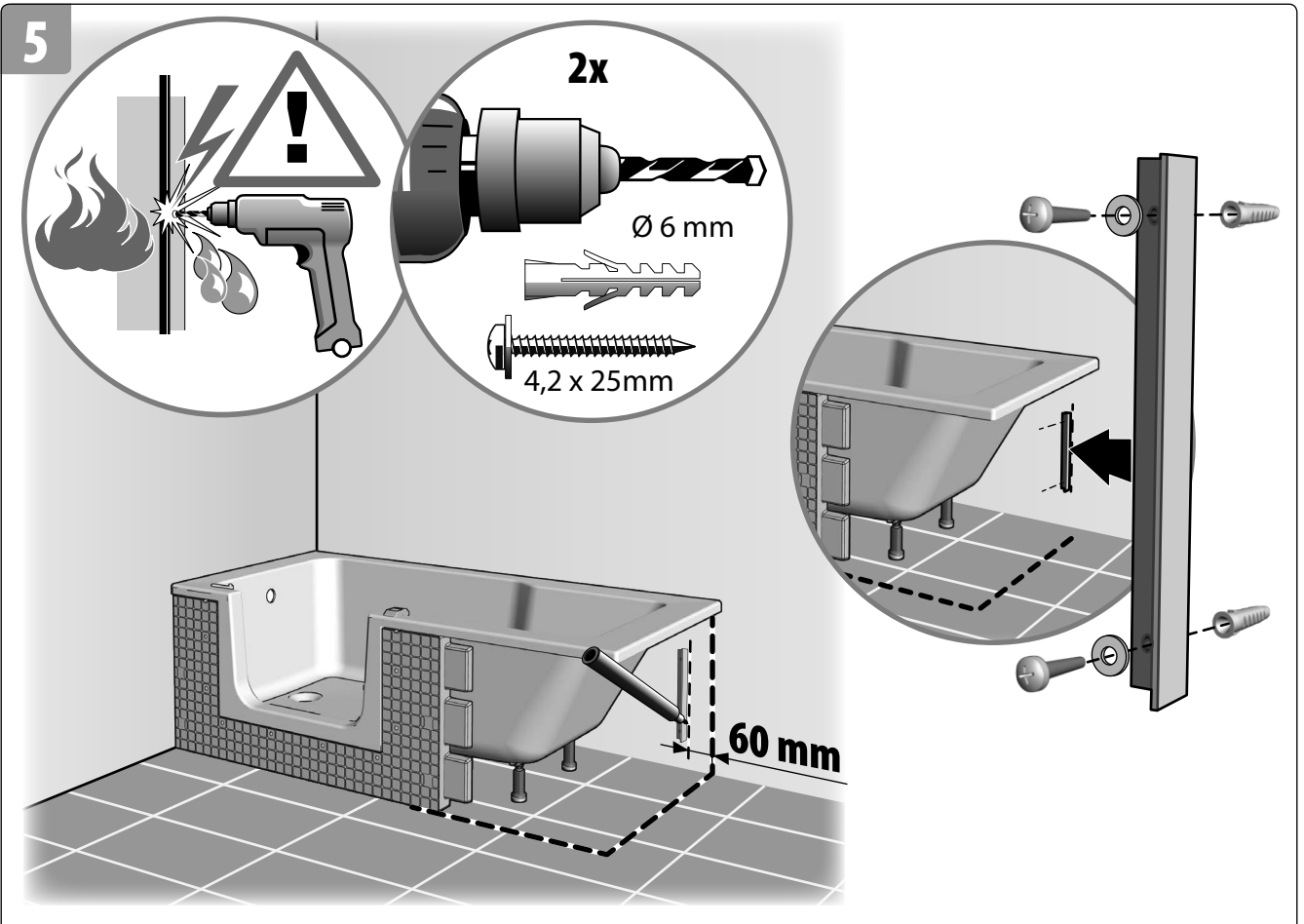
DUETT

SHOWER & BATH

4



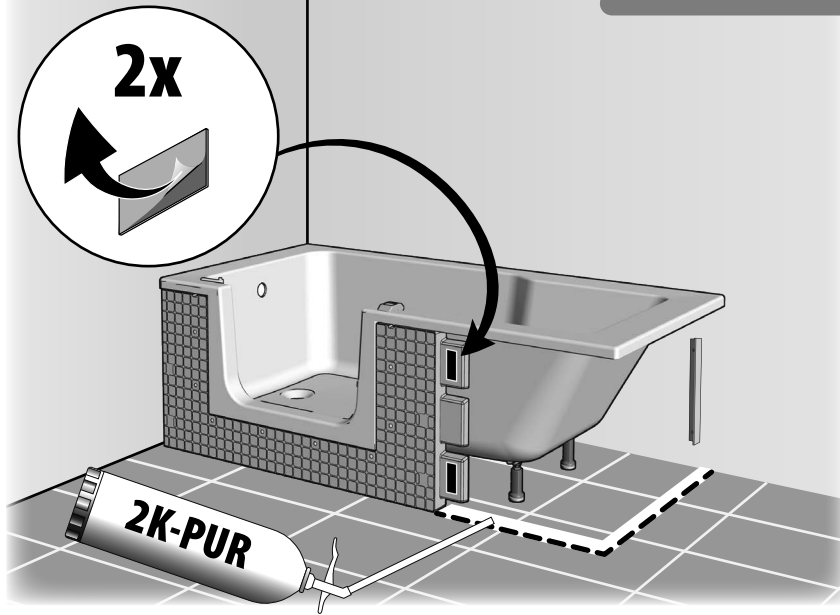
5



DUETT

SHOWER & BATH

6

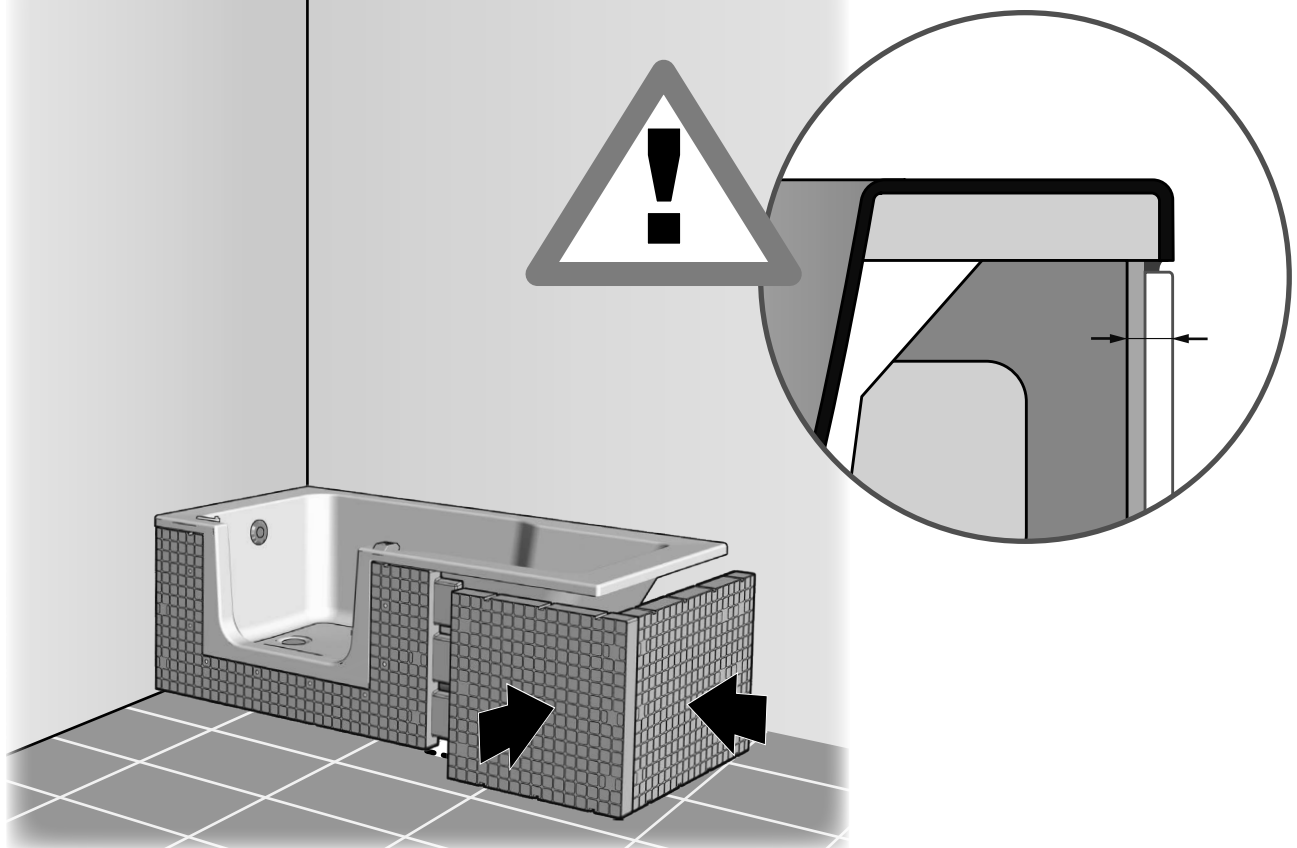


DE Wichtig! Verwenden Sie **ausschließlich nachdruckfreien 2K-PUR-Schaum!**

EN IMPORTANT! Use only **non-yielding 2K-PUR foam!**

FR IMPORTANT! Utilisez **exclusivement la mousse K-PUR qui ne déforma pas sous la pression après séchage!**

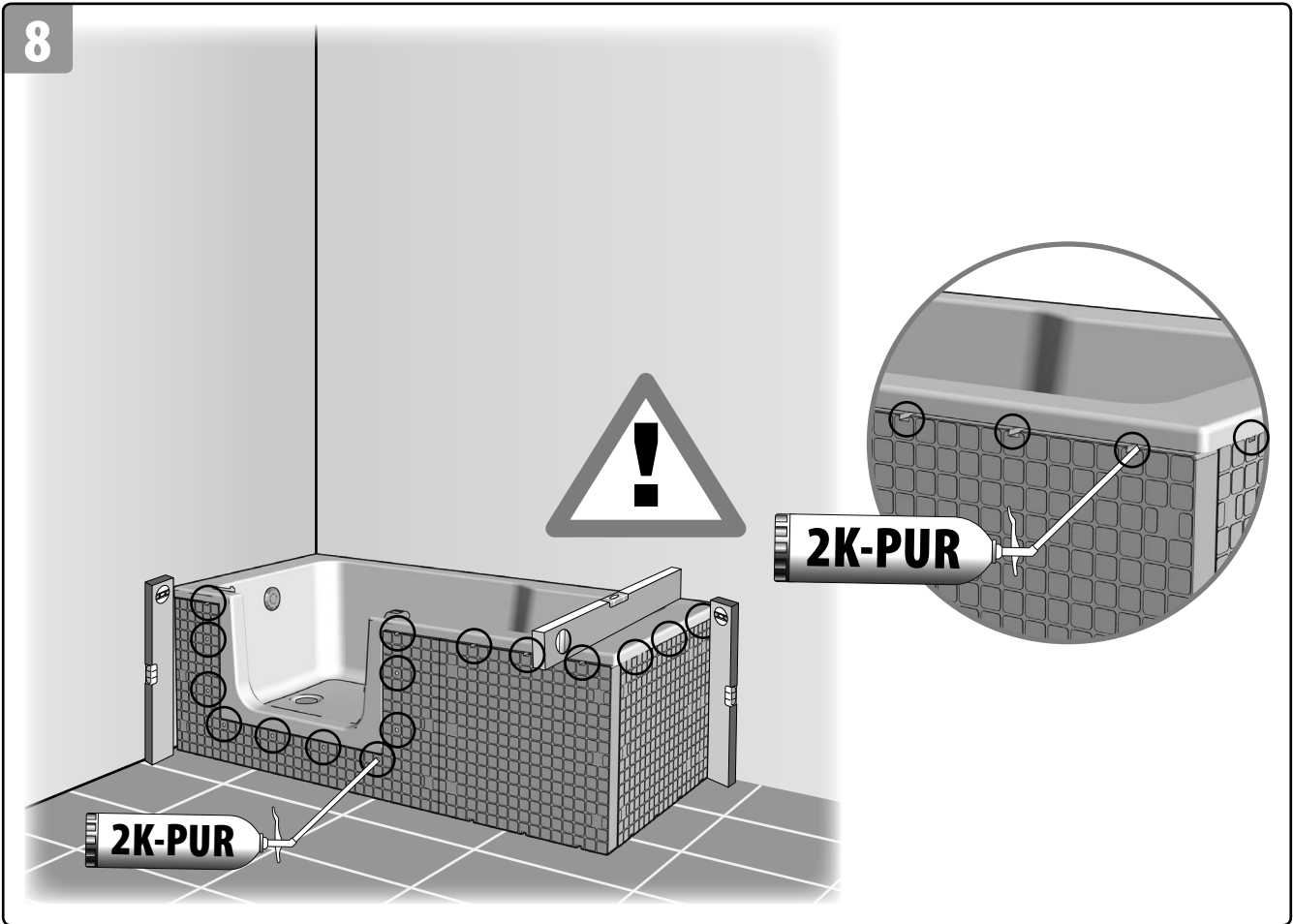
7



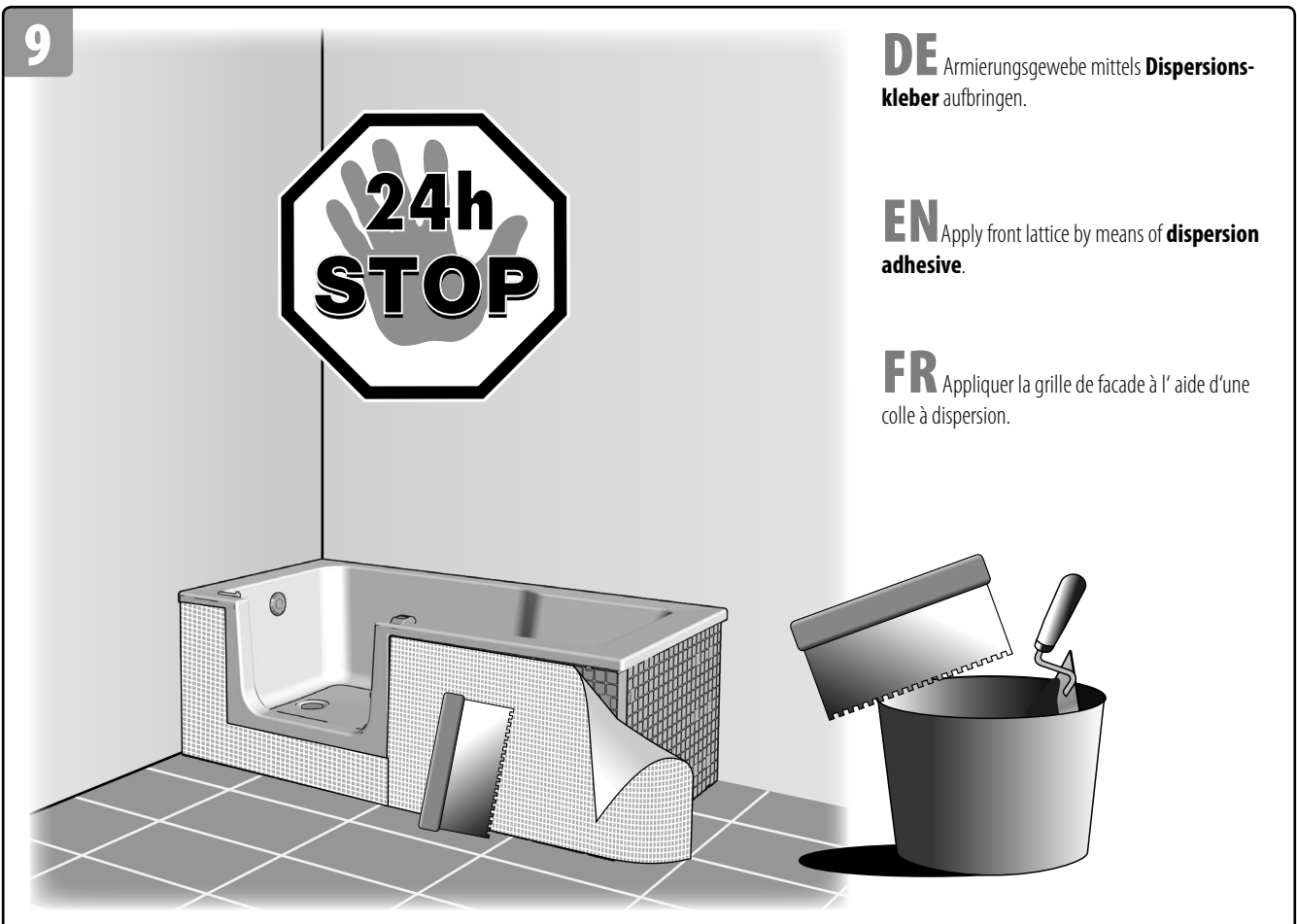
DUETT

SHOWER & BATH

8



9



DE Armierungsgewebe mittels **Dispersionskleber** aufbringen.

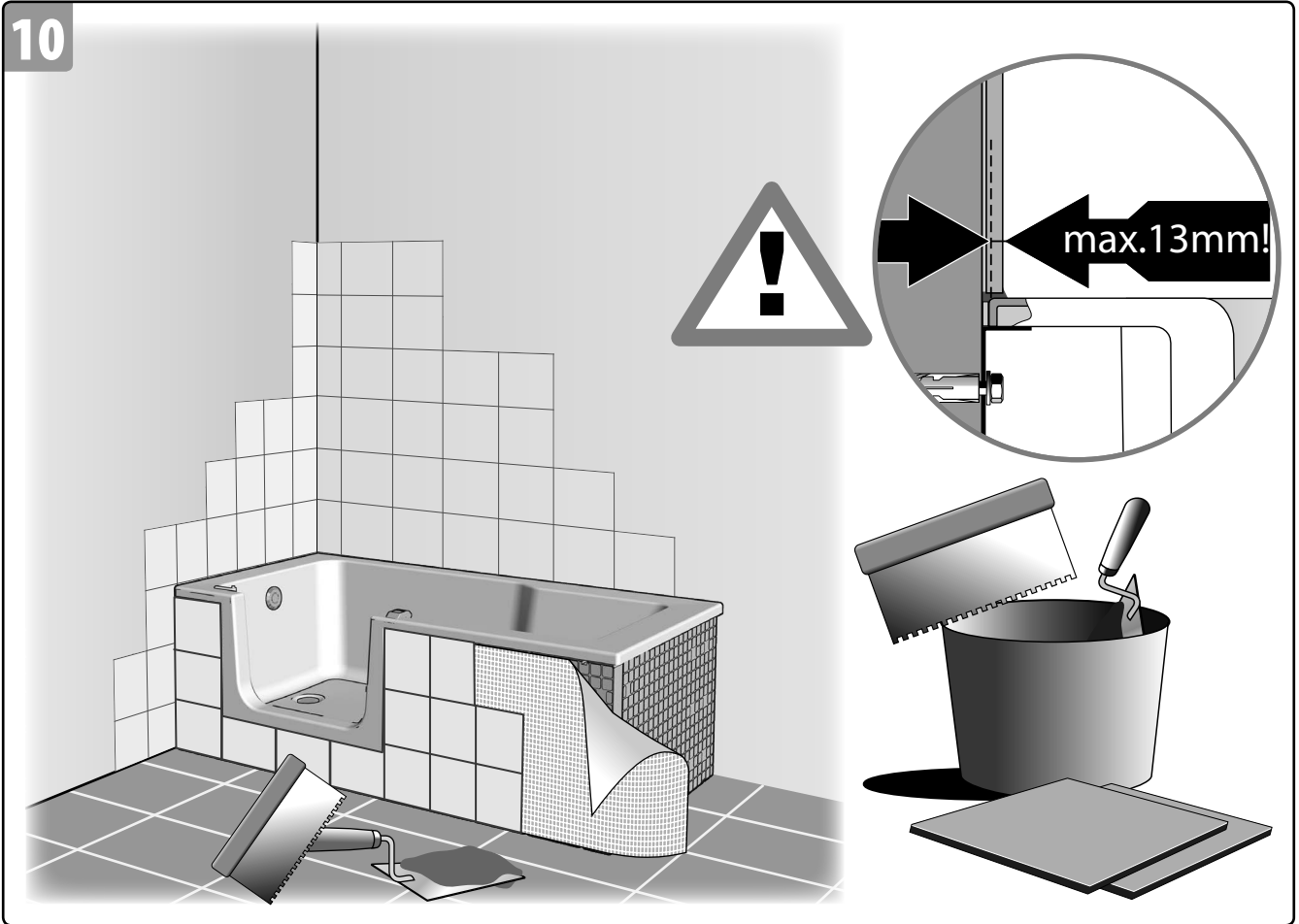
EN Apply front lattice by means of **dispersion adhesive**.

FR Appliquer la grille de facade à l' aide d'une colle à dispersion.

DUETT

SHOWER & BATH

10



11

